

Type KW6S2R Series /Gas Discharge Tube贴片氣體放電管



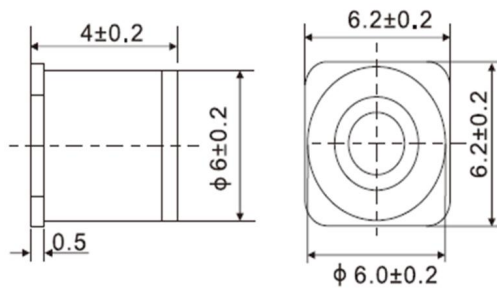
Features产品特征

- Non-Radioactive
非引线式的
- Low insertion loss
低插入损耗
- Excellent response to fast rising transients
对快速上升瞬态极好的响应
- 5KA surge capability testde with 8/20µs pulse as defined by IEC 61000-4-5
根据IEC 61000-4-5的定义, 测试8/20 µ s脉冲的5KA冲击能力
- RoHS compliant
通过无铅认证
- Ultra low capacitaonce
超低电容

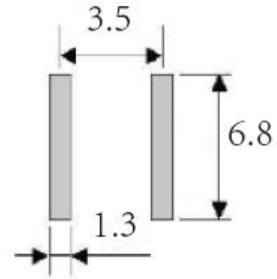
Applications产品应用

- Communication equipment
通信设备
- Test equipment
测试设备
- Broadband equipment
宽带设备
- Power supplies
电源供应器
- CATV equipment
有线电视设备
- Data lines
数据传输线
- ADSL equipment, including ADSL2+
ADSL设备, 包括ADSL2 +
- Telecom SLIC protection
电信SLIC保护

Dimensions(Unit:mm)尺寸 (单位: mm)



Recommended Land Pattern焊盘尺寸



Recommended Pad Size

Agency Approvals认证

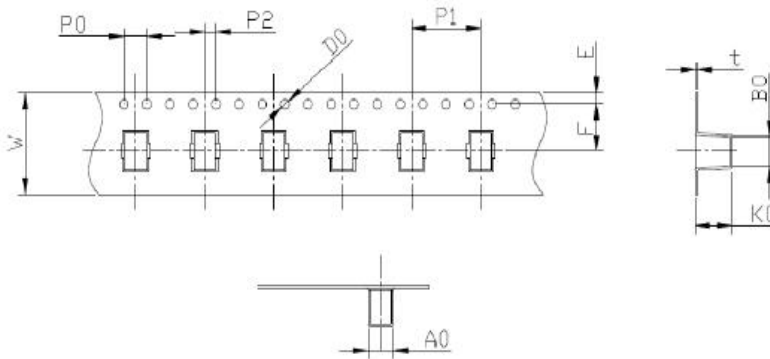
Icon	Description
RoHS	Compliance with 2011/65/EU
HF	Compliance with IEC61249-2-21:2003
	Mean Lead free
	Compliance with UL497B, Certificated E324754

Type KW6S2R Series

Electrical Specifications 电气特性

Catalog Number	DC Spark-Over Voltage 100V/s Vs(V)	Impulse Spark-Over 1KV/ μ s Vis(V)Max	Nom Impulse Discharge Current $10 \times 700 \mu$ s(KV)	Nom Impulse Discharge Current $8 \times 20 \mu$ s(KA)	Insulation Resistance		Capacitance C 1MHz < 6V pF Max
					Min. M Ω	DC V	
KW6S2R75	75V \pm 30%	700	5.0	5.0	1000	50	1
KW6S2R90	90V \pm 30%	700	5.0	5.0	1000	50	1
KW6S2R150	150V \pm 30%	700	5.0	5.0	1000	50	1
KW6S2R230	230V \pm 20%	600	5.0	5.0	1000	100	1
KW6S2R350	350V \pm 20%	800	5.0	5.0	1000	100	1
KW6S2R470	470V \pm 20%	900	5.0	5.0	1000	250	1
KW6S2R600	600V \pm 20%	1200	5.0	5.0	1000	250	1
KW6S2R1000	1000V \pm 20%	1800	5.0	5.0	1000	250	1

Packaging and Type Designation 包装和型号名称



符号	尺寸 (mm)
W \pm 0.2	16
A0 \pm 0.1	4.44
B0 \pm 0.1	6.48
K0 \pm 0.1	6.37
P0 \pm 0.1	4
P1 \pm 0.1	12
P2 \pm 0.1	2
t \pm 0.05	0.5
E \pm 0.1	1.75
F \pm 0.1	7.5
D0 \pm 0.1	1.55

Formation of Type Designation 类型命名的形成

Example: KW - 6 - S - 2R-90- * - * - *
① ② ③ ④ ⑤ ⑥ ⑦ ⑧

Symbols 符号表

① Company code	KW=Kingwahoo product
② Rated diameter	3=3mm diameter 4=4mm diameter 5=5mm diameter 6=6mm diameter ...
③ Load Configuration	A=Axial loads M=Radial loads 1 E=Radial Loads 2 S=SMD structure B=No load
④ Electrode amount	2R=2electrode device 3R=3 electrode device
⑤ DC Spark-over Voltage	75=75V 90=90V...
⑥ Surge rating	L=0.5KA T=1KA U=1.5KA N=2KA S=2.5KA R=5KA M=10KA H=20KA W: >20KA
⑦ Fail safe (FS)	F=With Fail Safe 0=Without Fail Safe
⑧ Package	B=Bulk Packing R=Reel Taping S=SMD Taping 0=No Require

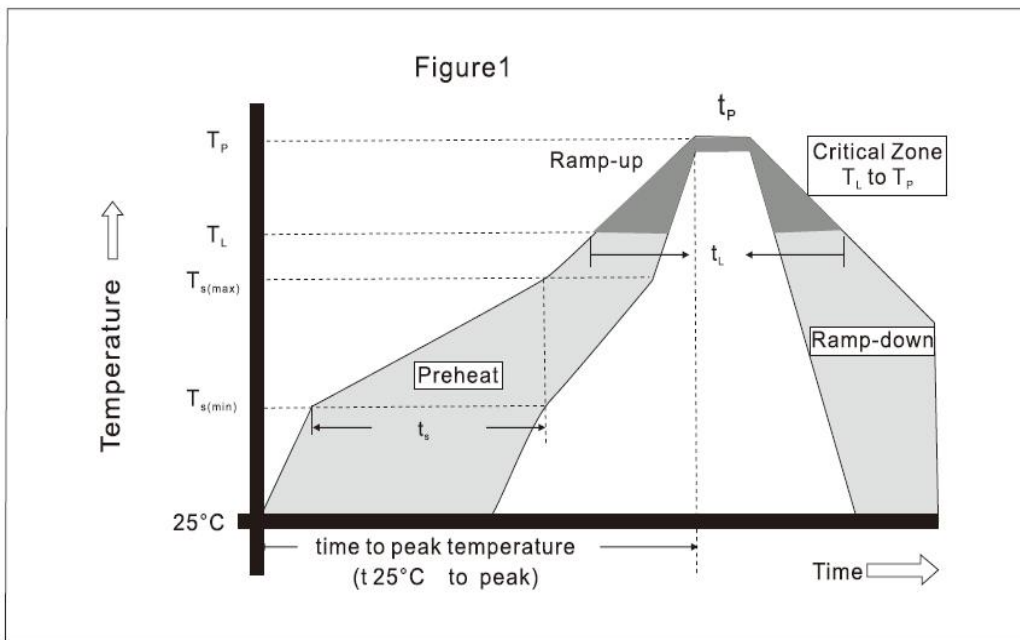
Packaging

On Taping: KW6S2R series-800pcs Per Reel, 3200PCS in box, 12800pcs Outer box.

Type KW6S2R Series

Soldering Parameters 焊接参数

Reflow Condition 回流条件		Pb-Free assembly 无铅制程
Heat Pre	Temperature Min (T_s)	150°C
	Temperature Max (T_s)	200°C
	Time (Min to Max) (t_s)	60-180secs
Average ramp up rate (Liquidus) Temp (T_L) to peak		3°C/second max
T_s (max) to T_L -Ramp-up Rate		5°C/second max
Reflow	-Temperature (T_L) (Liquidus)	217°C
	Time (Min to Max) (t_L)	60-150 seconds
Peak Temperature (T_p)		260 ^{0/-5} °C
Time within 5°C of actual peak Temperature (t_p)		8-20 seconds
Ramp-down Rate		6°C/second max
Time 25°C to peak Temperature (T_p)		8 minutes max.
Do not exceed		260°C



Temperature Range 温度范围

- Operating temp range: -55°C to +125°C
- Storage temp range: -40°C to +85°C