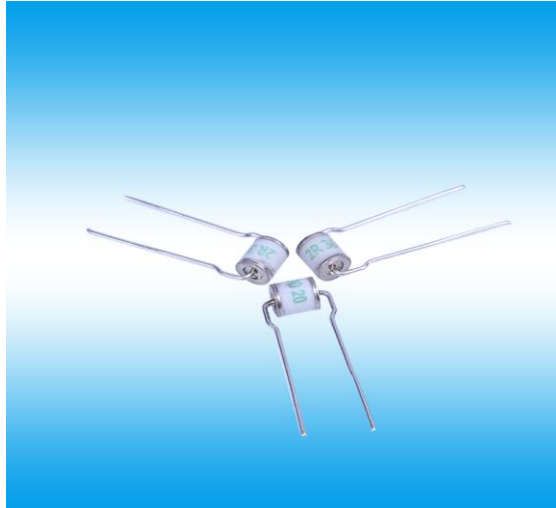


Type KW6M2R Series /Gas Discharge Tube氣體放電管



**Features** 产品特征

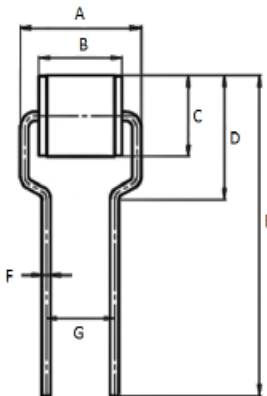
- Low insertion loss  
低插入损耗
- Excellent response to fast rising transients  
对快速上升瞬态极好的响应
- 5KA surge capability testde with 8/20μs pulse as defined by IEC 61000-4-5  
根据IEC 61000-4-5的定义，测试8/20μs脉冲的5KA冲击能力
- RoHS compliant  
通过无铅认证
- Ultra low capacitance  
超低电容

**Applications** 产品应用

- Communication equipment  
通信设备
- Test equipment  
测试设备
- Broadband equipment  
宽带设备
- Power supplies  
电源供应器
- CATV equipment  
有线电视设备
- Data lines  
数据传输线
- ADSL equipment,including ADSL2+  
ADSL设备,包括ADSL2 +
- Telecom SLIC protection  
电信SLIC保护

**Dimensions(Unit:mm)** 尺寸 (单位: mm)

- A=8.5-9.1
- B=5.8-6.2
- C=5.3-5.7
- D=7.7-8.3
- E=25-29
- F=0.55-0.65
- G=4.5-5.5



**Agency Approvals** 认证

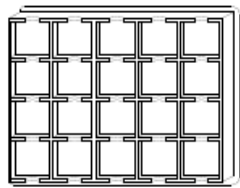
Icon	Description
RoHS	Compliance with 2011/65/EU
HF	Compliance with IEC61249-2-21:2003
	Mean Lead free
	Compliance with UL497B,Certificated E324754

Type KW6M2R Series

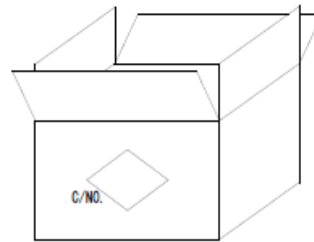
Electrical Specifications 电气特性

Catalog Number	DC Spark-Over Voltage 100V/s Vs(V)	Impulse Spark-Over 1KV/μs Vis(V)Max	Nom Impulse Discharge Current 10×700μs(KV)	Nom Impulse Discharge Current 8×20μs(KA)	Insulation Resistance		Capacitance C 1MHz < 6V pF Max
					Min. MΩ	DC V	
KW6M2R75	75V±30%	700	5.0	5.0	1000	50	1
KW6M2R90	90V±30%	700	5.0	5.0	1000	50	1
KW6M2R150	150V±30%	700	5.0	5.0	1000	50	1
KW6M2R230	230V±20%	600	5.0	5.0	1000	100	1
KW6M2R350	350V±20%	800	5.0	5.0	1000	100	1
KW6M2R470	470V±20%	900	5.0	5.0	1000	250	1
KW6M2R600	600V±20%	1200	5.0	5.0	1000	250	1
KW6M2R1000	1000V±20%	1800	5.0	5.0	1000	250	1

Packaging and Type Designation 包装和型号名称



100PCS/PVC



5000PCS/BOX

Formation of Type Designation 类型命名的形成

Example:

KW - 6 - M - 2R-90- \* - \* - \*

① ② ③ ④ ⑤ ⑥ ⑦ ⑧

Symbols 符号表

① Company code	KW=Kingwahoo product
② Rated diameter	3=3mm diameter 4=4mm diameter 5=5mm diameter 6=6mm diameter ...
③ Load Configuration	A=Axial loads M=Radial loads 1 E=Radial Loads 2 S=SMD structure B=No loads
④ Electrode amount	2R=2electrode device 3R=3 electrode device
⑤ DC Spark-over Voltage	75=75V 90=90V...
⑥ Surge rating	L=0.5KA T=1KA U=1.5KA N=2KA S=2.5KA R=5KA M=10KA H=20KA W: > 20KA
⑦ Fail safe(FS)	F=With Fail Safe O=Without Fail Safe
⑧ Package	B=Bulk Packing R=Reel Taping S=SMD Taping O=No Require

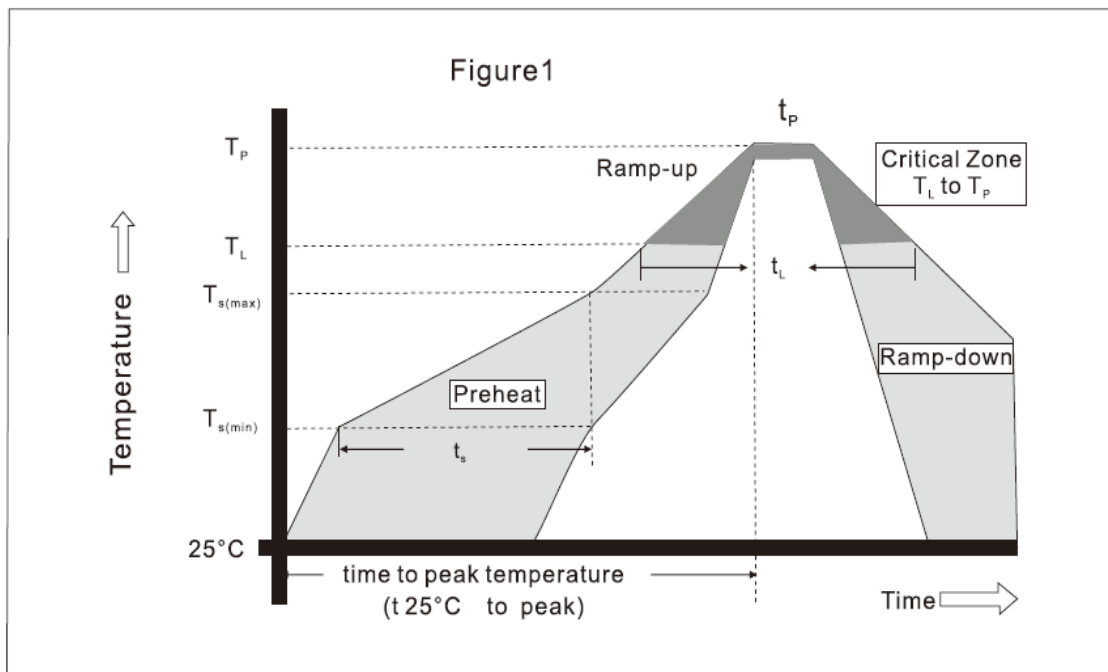
Packaging

On Taping: KW6M2R series-100pcs PVC, 500PCS in box, 5000pcs Outer box.

Type KW6M2R Series

**Soldering Parameters** 焊接参数

Reflow Condition 回流条件		Pb-Free assembly 无铅制程
Heat Pre	Temperature Min( $T_s$ )	150°C
	Temperature Max( $T_s$ )	200°C
	Time(Min to Max)( $t_s$ )	60-180secs
Average ramp up rate(Liquidus)Temp( $T_L$ )to peak		3°C/second max
$T_s$ (max)to $T_L$ -Ramp-up Rate		5°C/second max
Reflow	-Temperature( $T_L$ )(Liquidus)	217°C
	Time(Min to Max)( $t_L$ )	60-150 seconds
Peak Temperature( $T_p$ )		260 <sup>-0/-5</sup> °C
Time within 5°C of actual peak Temperture( $t_p$ )		8-20 seconds
Ramp-down Rate		6°C/second max
Time 25°C to peak Temperature( $T_p$ )		8 minutes max.
Do not exceed		260°C



**Temperature Range** 温度范围

- Operating temp range:-55°C to +125°C
- Storage temp range:-40°C to +85°C